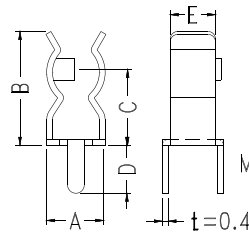
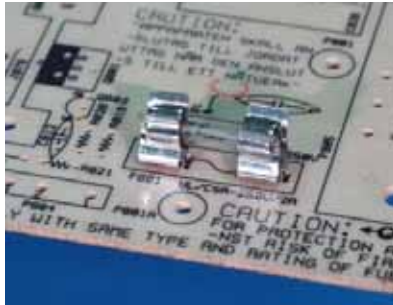


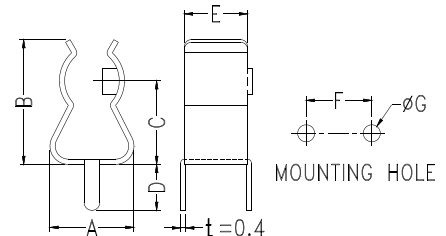
## Test Pin

- ◆ MATERIAL:GOLD PLATED BRASS
- ◆ UNIT:mm

PART NO	PACKAGE
TEST-31	2000



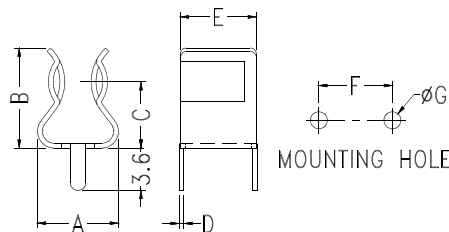
FUC-01



FUC-02

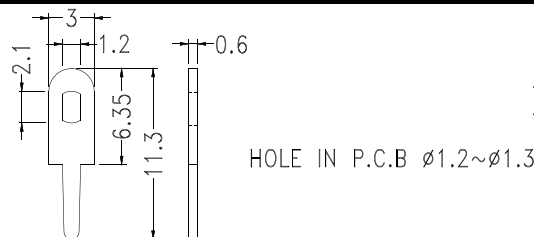
- ◆ FUC-01 MATERIAL:PHOSP HOR BRONZ E
- ◆ FUC-02 MATERIAL:C2680
- ◆ FINISH:TIN PLATED
- ◆ UNIT:mm

PARTNO	A	B	C	D	E	F	G	適用保險絲	PACKAGE
FUC-01	4.0	7.8	5.2	3.3	3.1	3.8	1.2	φ 3.6	1000
FUC-02	6.4	9.5	6.5	3.5	4.8	5.1	1.3	φ 5.2	



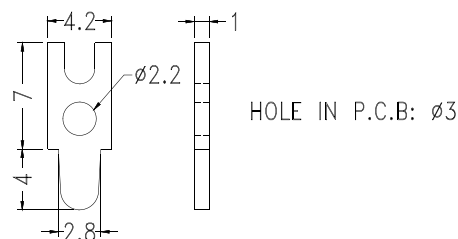
- ◆ MATERIAL:BRASS
- ◆ FINISH:TIN PLATED
- ◆ UNIT:mm

PARTNO	A	B	C	D	E	F	G	適用保險絲	PACKAGE
FUC-03	6.8	8.3	5.5	0.4	6.3	6.0	1.4	φ 5.2	1000
FUC-03A	6.4	8.8		0.5		6.7			
FUC-04	8.1	10.9	6.8	7.0	7.5	1.7	φ 6.3		

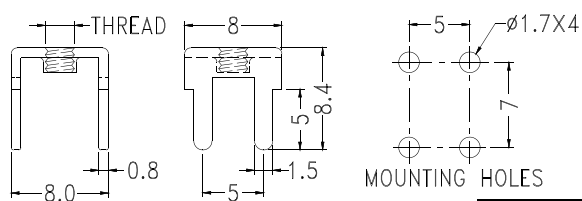


- ◆ MATERIAL:TIN PLATED BRASS
- ◆ UNIT:mm

PART NO	PACKAGE
PIN-1	2000



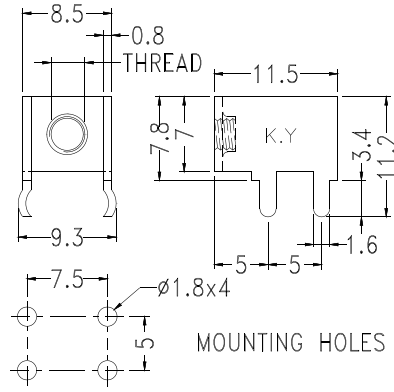
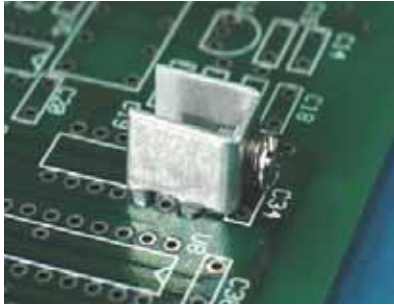
PART NO	PACKAGE
PIN-2	2000



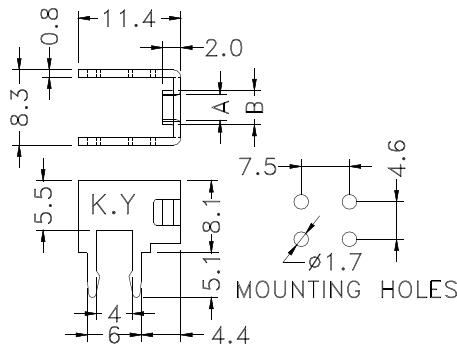
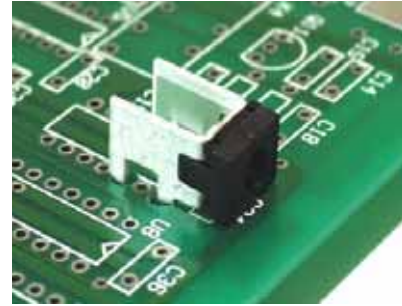
F-35

PART NO	THREAD	PACKAGE
PCB-1	M3X0.5	1000
PCB-1(M4)	M4X0.7	
PCB-1(6-32)	6-32 UNC	

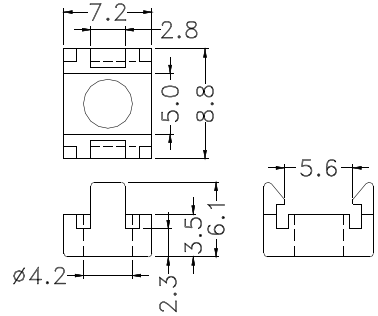
- ◆ MATERIAL: TIN PLATED BRASS
- ◆ RATED: 15AMPS
- ◆ UNIT: mm



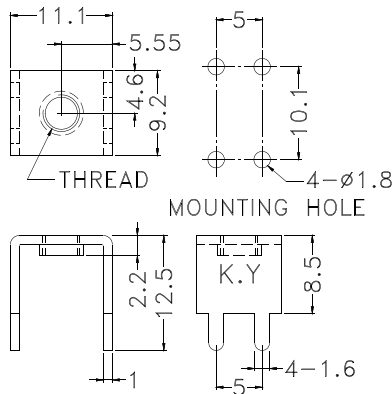
PART NO	THREAD	PACKAGE
PCB-2	M3X0.5	1000
PCB-2(M4)	M4X0.7	
PCB-2(6-32)	6-32 UNC	



PCB-4CV 可配合PCB-4端子使用



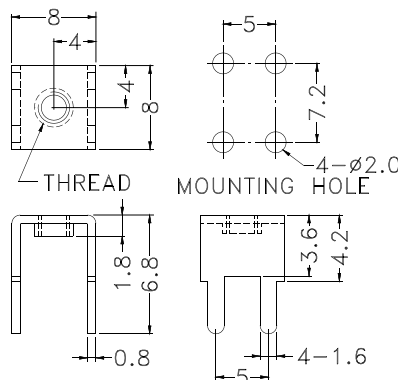
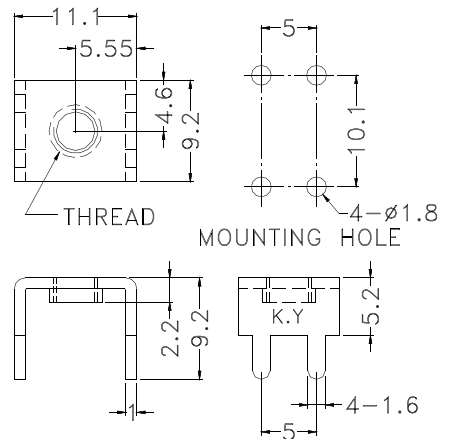
PART NO	A	B	PACKAGE
PCB-4	M3X0.5	3.5	1000
PCB-4(M4)	M4X0.7	4.4	
PCB-4(632)	6-32 UNC		



PART NO	TAPPED	PACKAGE
PCB-7	M3X0.5	1000
PCB-7(M4)	M4X0.7	
PCB-7(632)	6-32 UNC	



PART NO	TAPPED	PACKAGE
PCB-8	M3X0.5	1000
PCB-8(M4)	M4X0.7	
PCB-8(632)	6-32 UNC	

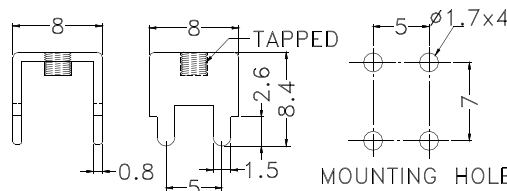
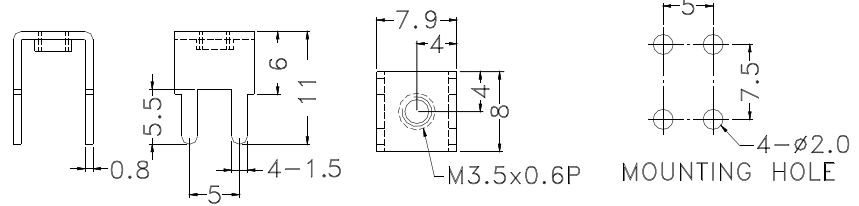


PART NO	TAPPED	PACKAGE
PCB-9	M3X0.5	1000
PCB-9(M4)	M4X0.7	
PCB-9(632)	6-32 UNC	



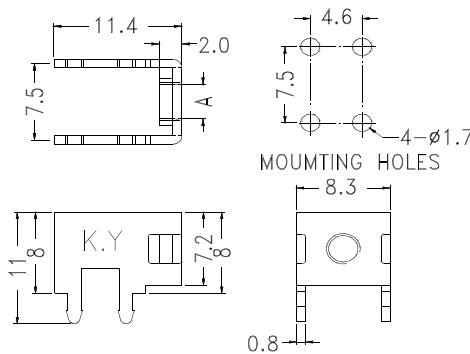
- ◆ MATERIAL:TIN PLATED BRASS
- ◆ RATED:15AMPS
- ◆ UNIT:mm

PART NO	TAPPED	PACKAGE
PCB-10	M3.5	1000

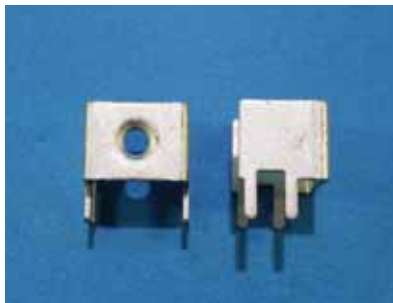


PART NO	TAPPED	PACKAGE
PCB-11	M3	1000
PCB-11(M4)	M4	
PCB-11(632)	6-32 UNC	

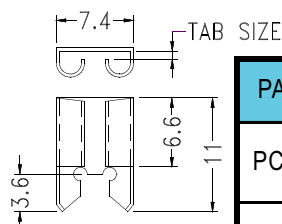
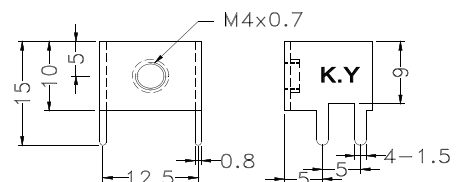
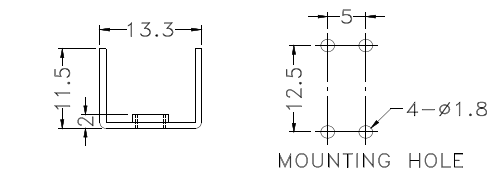
UNC6-32 FOR PCB-11(STP CAN COOPERATE SCREW USE



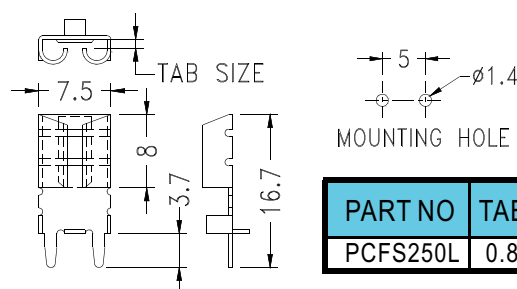
PART NO	TAPPED (A)	PACKAGE
PCB-12	M3X0.5	1000
PCB-12(M4)	M4X0.7	
PCB-12(632)	6-32 UNC	



PART NO	PACKAGE
PCB-15	1000

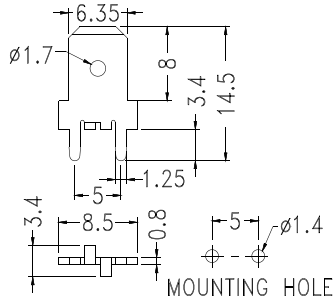
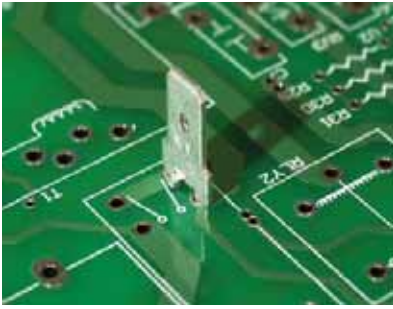


PART NO	TAB SIZE	TERMINAL THICKNESS	HOLES IN PCB
PCFS2505	0.5X6.35	0.4	
PCFS2508	0.8X6.35		



PART NO	TAB SIZE	TERMINAL THICKNESS	PACKAGE
PCFS250L	0.8X6.35	0.4	1000

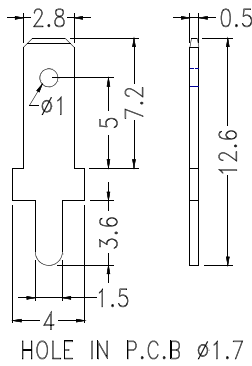
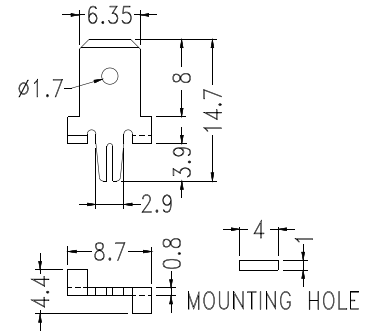
- ◆ MATERIAL: TIN PLATED BRASS
- ◆ UNIT:mm



PART NO	PACKAGE
PCH250	1000



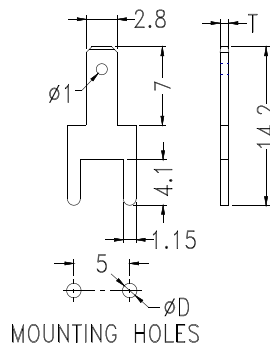
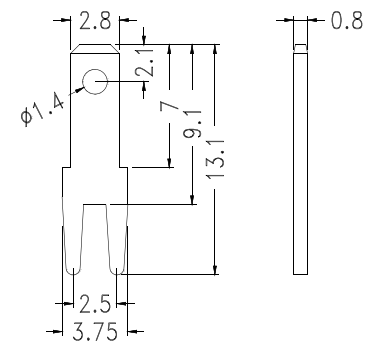
PART NO	PACKAGE
PCK250	1000



PART NO	PACKAGE
PC110	2000



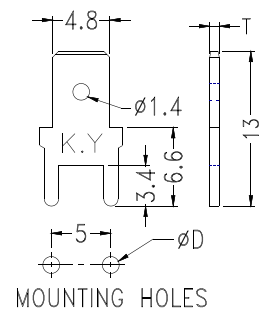
PART NO	PACKAGE
PC110-1	2000

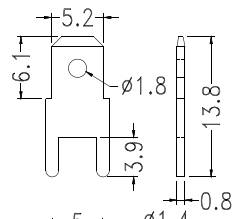


PART NO	T	D	PACKAGE
PC110D5	0.5	1.3	2000
PC110D8	0.8	1.4	



PART NO	T	D	PACKAGE
PC187	0.5	1.3	2000
PC187(0.8)	0.8	1.4	



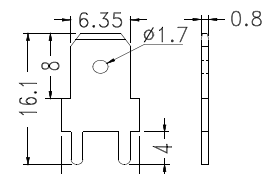


◆ MATERIAL: TIN PLATED BRASS  
◆ UNIT:mm

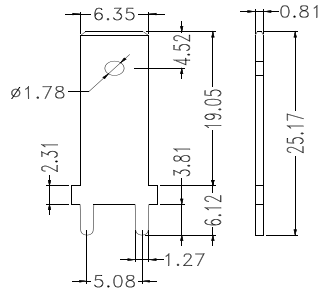
PART NO	PACKAGE
PC205	1000

PART NO	PACKAGE
PC250	1000

MOUNTING HOLE

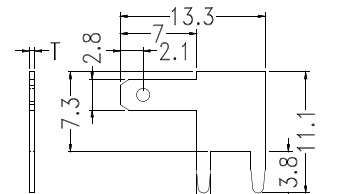


MOUNTING HOLE



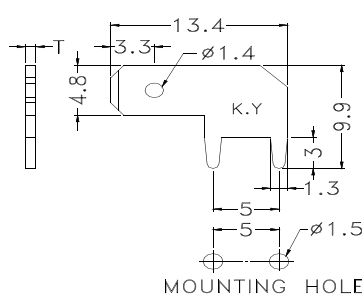
◆ MATERIAL: PLATED NICKEL BRASS  
◆ UNIT:mm

PART NO	PACKAGE
PC250-4	1000



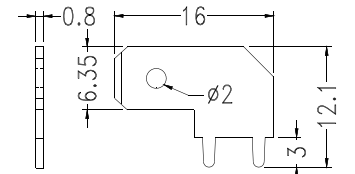
MOUNTING HOLES

PART NO	T	PACKAGE
PCF110	0.5	1000
PCF1108	0.8	



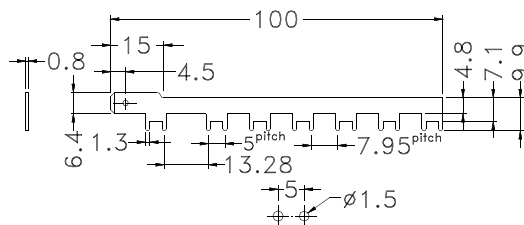
MOUNTING HOLE

PART NO	T	PACKAGE
PCF187(5)	0.5	1000
PCF187	0.8	



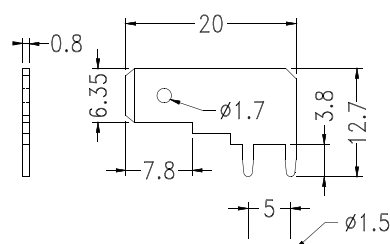
MOUNTING HOLE

PART NO	PACKAGE
PCF250	1000



MOUNTING HOLES

PART NO	PACKAGE
PCF250-7	500

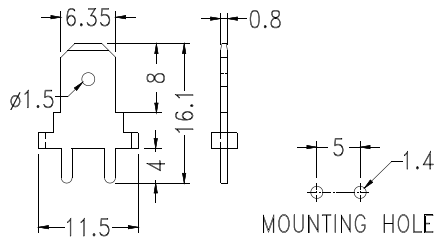
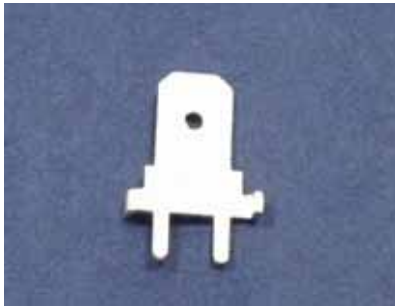


MOUNTING HOLE

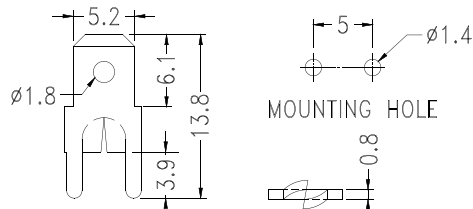
PART NO	PACKAGE
PCFL250	1000



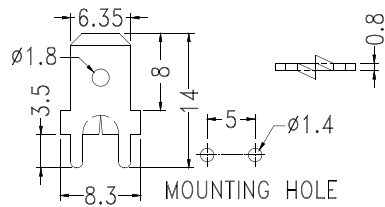
◆ MATERIAL:TIN PLATED BRASS  
◆ UNIT:mm



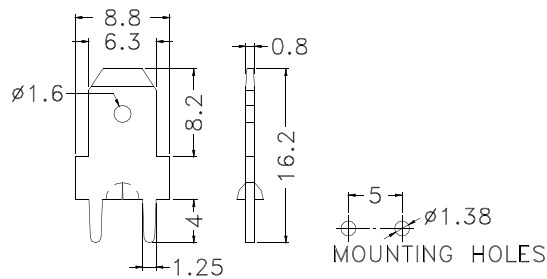
PART NO	PACKAGE
PCR250	1000



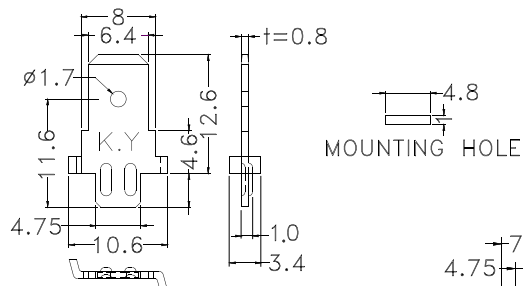
PART NO	PACKAGE
PCRS205	1000



PART NO	PACKAGE
PCRS250	1000



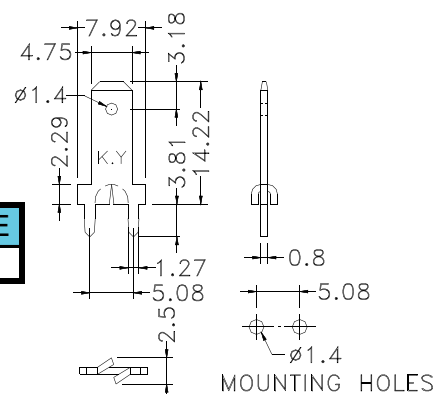
PART NO	PACKAGE
PCRS250-1	1000



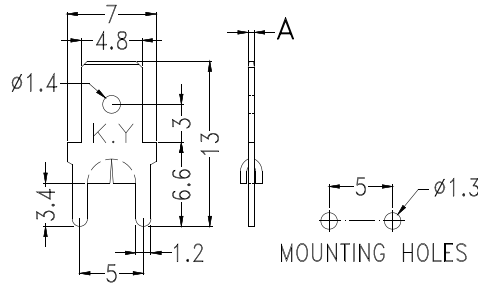
PART NO	PACKAGE
PCRN250	1000



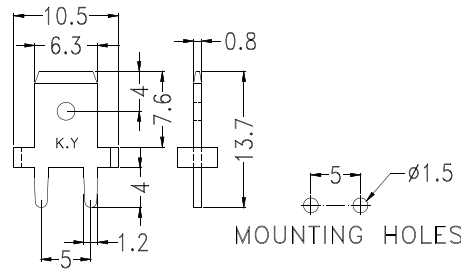
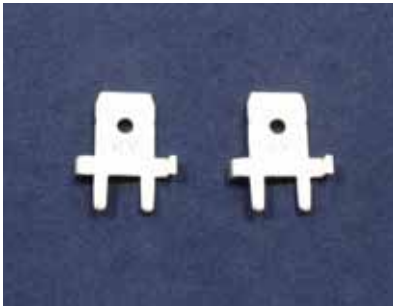
PART NO	PACKAGE
PCRS187A	1000



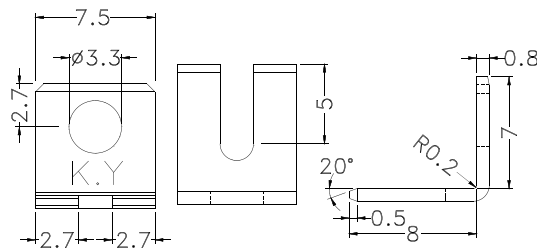
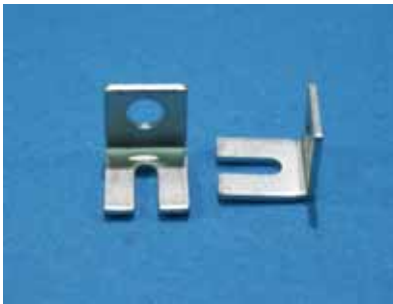
◆ MATERIAL: TIN PLATED BRASS  
◆ UNIT:mm



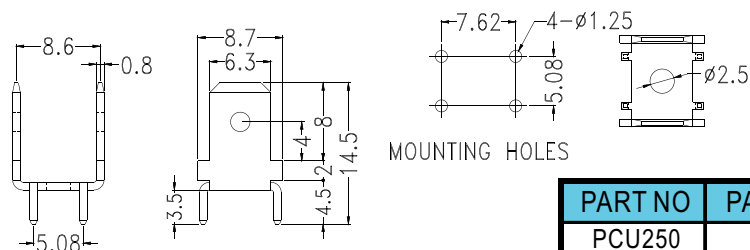
PART NO	A	PACKAGE
PCR187	0.5	1000
PCR187(0.8)	0.8	



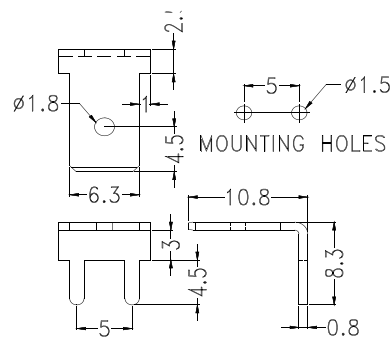
PART NO	PACKAGE
PCR250-S	1000



PART NO	PACKAGE
PCTL-3.5	1000



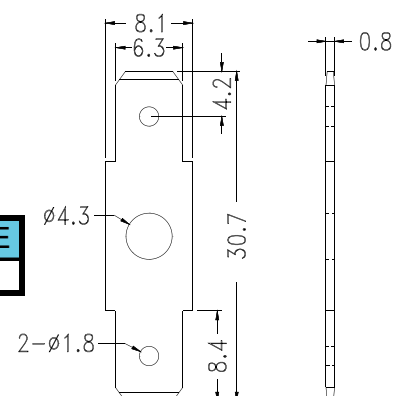
PART NO	PACKAGE
PCU250	1000



PART NO	PACKAGE
PC1L250-1A	1000



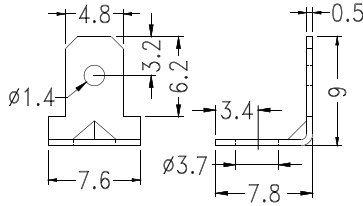
PART NO	PACKAGE
PC12250	1000



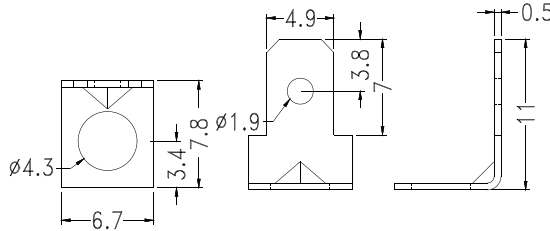
# Electronic Component - P.C.B TERMINAL

Hankook Fastener

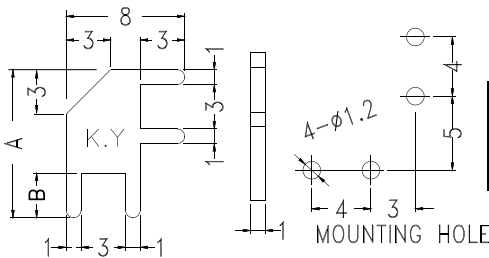
- ◆ MATERIAL: TIN PLATED BRASS
- ◆ UNIT: mm



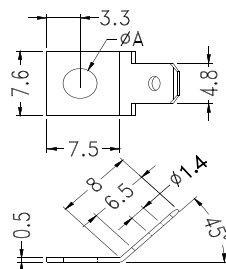
PART NO	PACKAGE
PC1L187	1000



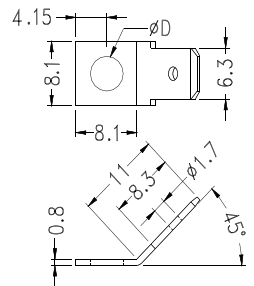
PART NO	PACKAGE
PC1L18704	1000



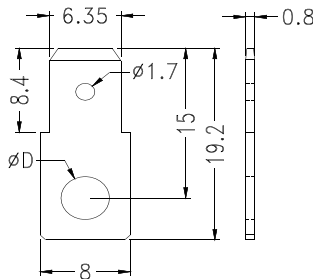
PART NO	A	B	PACKAGE
PCLT-10	10.0	3.0	1000
PCLT-11	11.0	4.0	



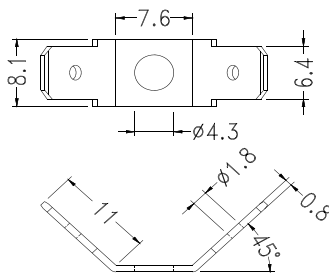
PART NO	A	PACKAGE
PC1V187	3.5	1000
PC1V18704	4.3	
PC1V18705	5.3	



PART NO	D	PACKAGE
PC1L250	4.3	1000
PC1L25005	5.3	



PART NO	D	PACKAGE
PC11250	4.3	1000
PC1125003	3.2	
PC1125035	3.5	
PC1125005	5.3	

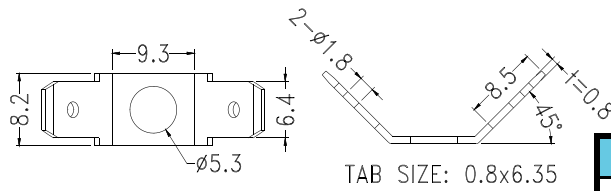


PART NO	PACKAGE
PC2L250	1000



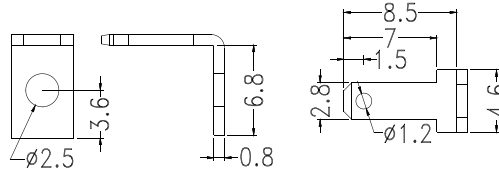
# Electronic Component - P.C.B TERMINAL

Hankook Fastener

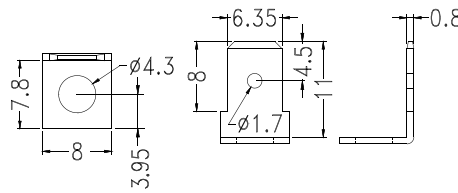


- ◆ MATERIAL: TIN PLATED BRASS
- ◆ UNIT:mm

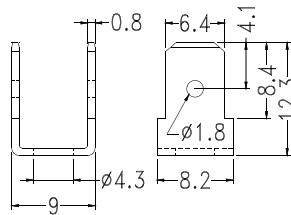
PART NO	PACKAGE
PC2L25005	1000



PART NO	PACKAGE
PC3L110028	1000

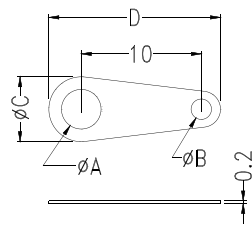


PART NO	PACKAGE
PC3L25004	1000



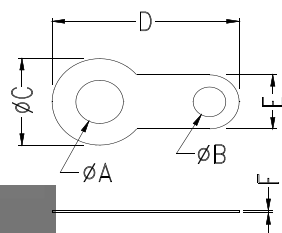
PART NO	PACKAGE
PC2L250-90	1000

# Electronic Component - GROUND TERMINAL



- ◆ MATERIAL: NICKEL PLATED BRASS
- ◆ UNIT:mm

PART NO	A	B	C	D	PACKAGE
GND-1	3.2	1.6	5.5	14.3	2000
GND-3A	4.1	2.4	6.5	15.5	



PART NO	A	B	C	D	E	F	PACKAGE
GND-2	3.2	2.1	6.4	12.6	4.0	0.25	2000
GND-3	4.3	2.0	8.0	17.7	4.6	0.3	
GND-4	5.2	2.1	9.9	19.6	5.1		
GND-5	8.3	1.9	10.0	15.0	4.0		1000
GND-6	9.7	2.0	13.0	21.5			
GND-10	6.3	2.1	10.0	19.9	5.1	0.3	2000
GND-11	9.0	2.0	13.0	30.0	4.0		1000
GND-17	4.2	1.6	6.8	12.9	3.2	0.4	2000
GND-21	3.7		6.3	12.6			